

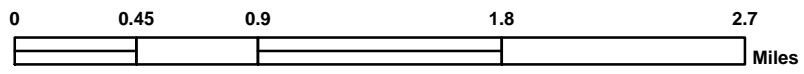
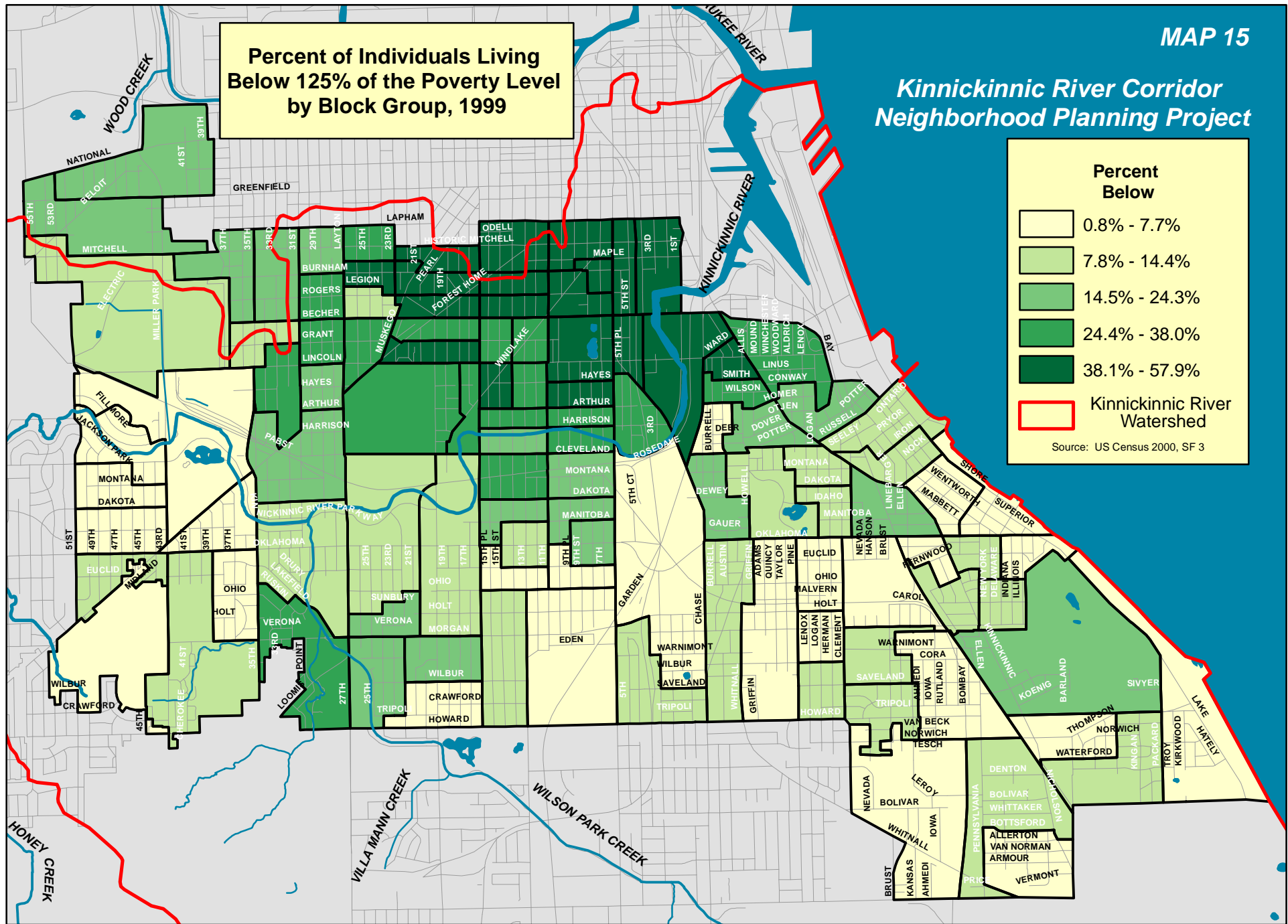
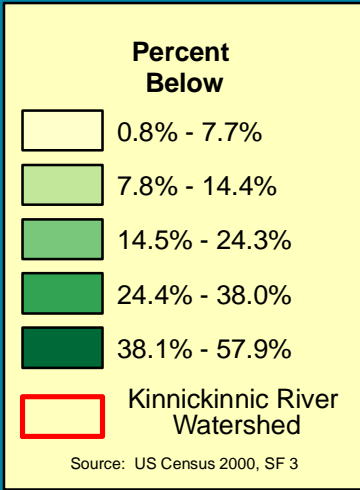






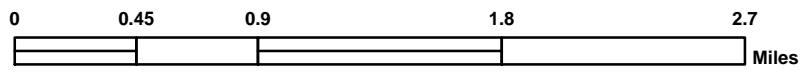
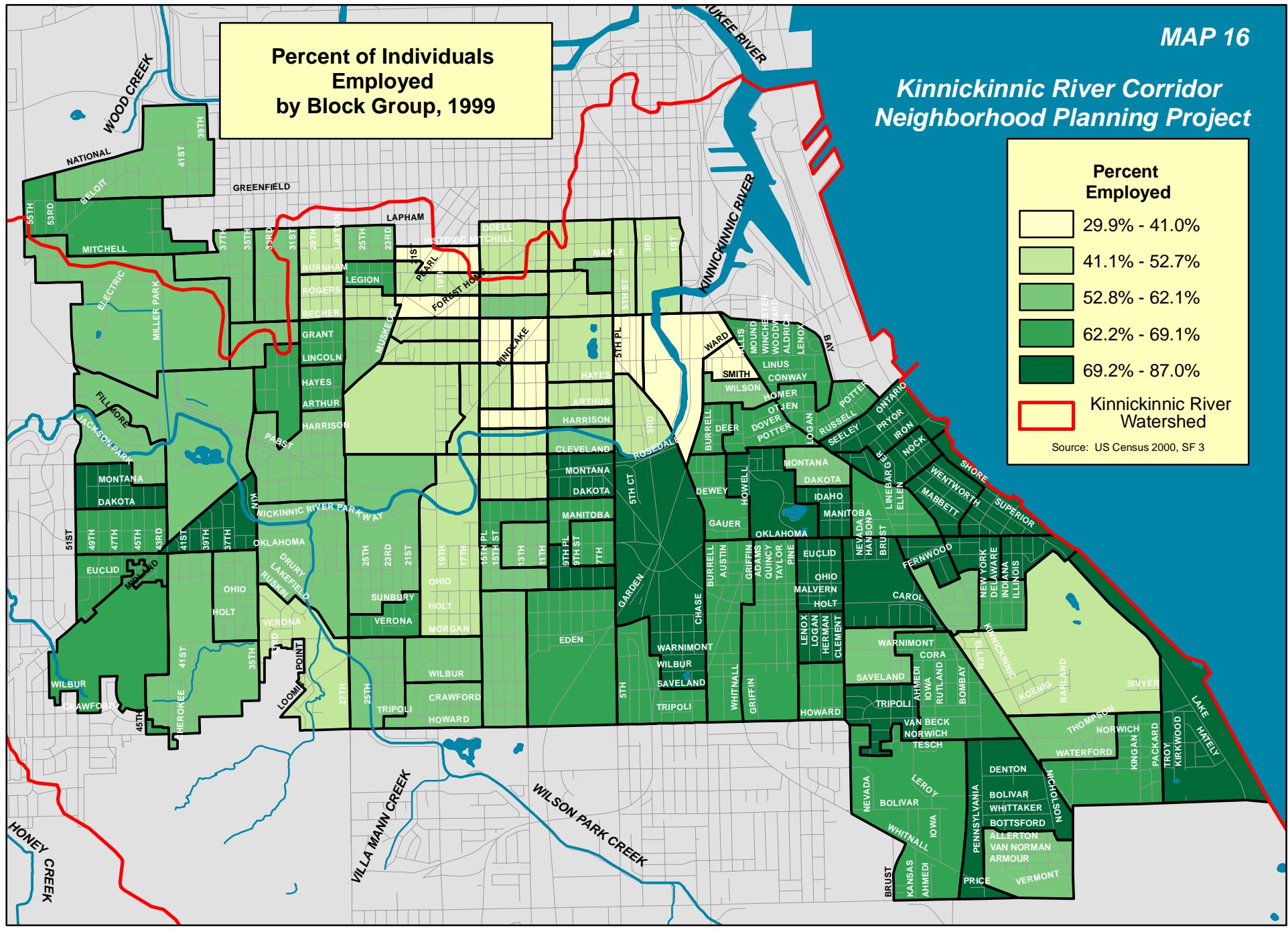
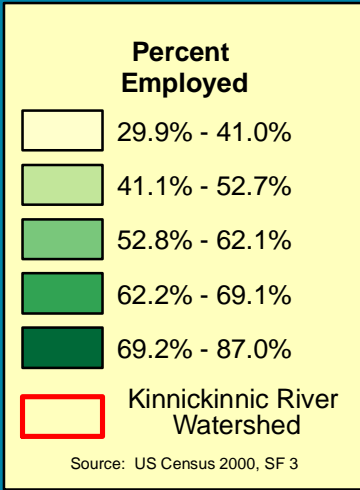
# Kinnickinnic River Corridor Neighborhood Planning Project

**Percent of Individuals Living  
Below 125% of the Poverty Level  
by Block Group, 1999**



*Kinnickinnic River Corridor  
Neighborhood Planning Project*

**Percent of Individuals  
Employed  
by Block Group, 1999**



# Kinnickinnic River Corridor Neighborhood Planning Project

**Percent of Individuals Who Speak English "Not Well" or "Not at All" by Block Group, 2000**  
(From Census SF 3: Table P19 where there were two other categories - "Very Well" and "Well")

**Percent Able to Speak English less than "Well"**

0.0% - 2.3%
2.4% - 7.0%
7.1% - 12.9%
13.0% - 19.7%
19.8% - 32.5%

**Kinnickinnic River Watershed**

Source: US Census 2000, SF 3

